



EUSBSR POLICY AREA SECURE

Defining Policy Area Focus



Janusz Gąciarz, Senior Advisor, Civil Security, CBSS Secretariat

CBSS long-term priorities:

**REGIONAL
IDENTITY**

**SAFE & SECURE
REGION**

**SUSTAINABLE
&
PROSPEROUS
REGION**

CBSS - 'Safe and Secure Region'

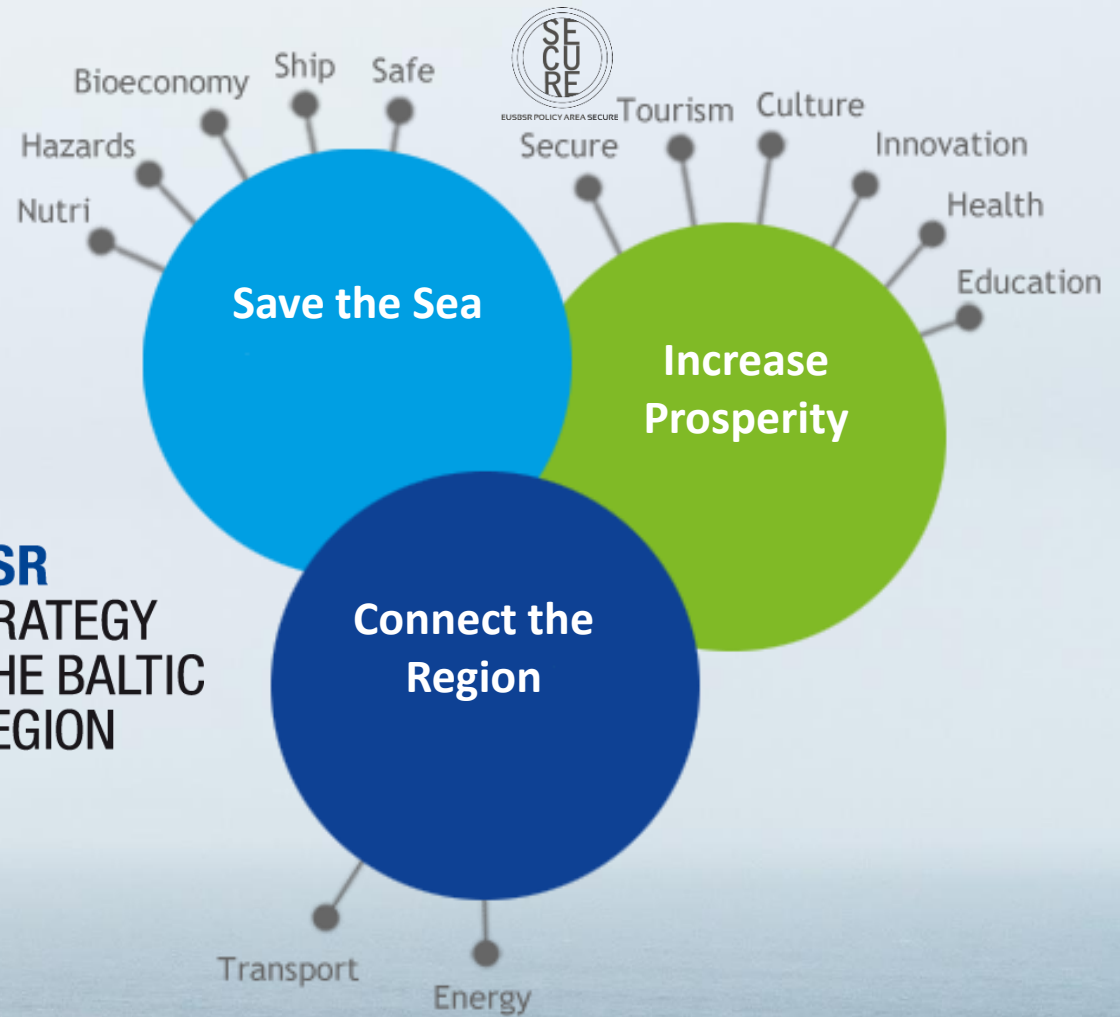


EUSBSR POLICY AREA SECURE





EUSBSR
EU STRATEGY
FOR THE BALTIC
SEA REGION



Spatial Planning	Neighbours	Capacity	Climate
------------------	------------	----------	---------



EUSBSR POLICY AREA SECURE

Civil Protection

Law Enforcement

**Reduce
Transboundary
Vulnerabilities**

**Enhance
Regional
Resilience**

**Build common
Capacities for
Societal Security**



EUSBSR POLICY AREA SECURE



Swedish Civil
Contingencies
Agency

Coordination of efforts

Connecting networks and actors facing common
challenges

Identifying funding opportunities

Dooropener to longlasting partnerships

Identifying needs, and intitiating processes

*"A connecting hub, in a dynamic multi-level,
and multi-actor context"*

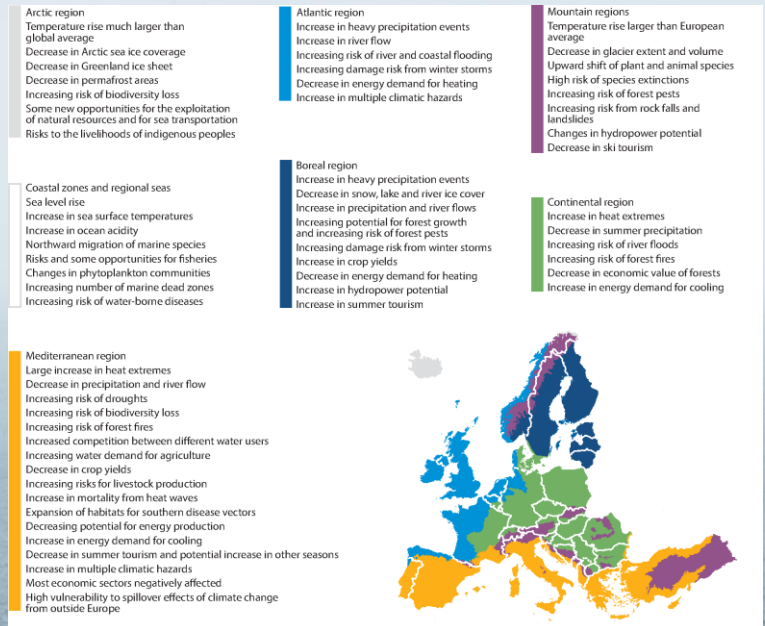
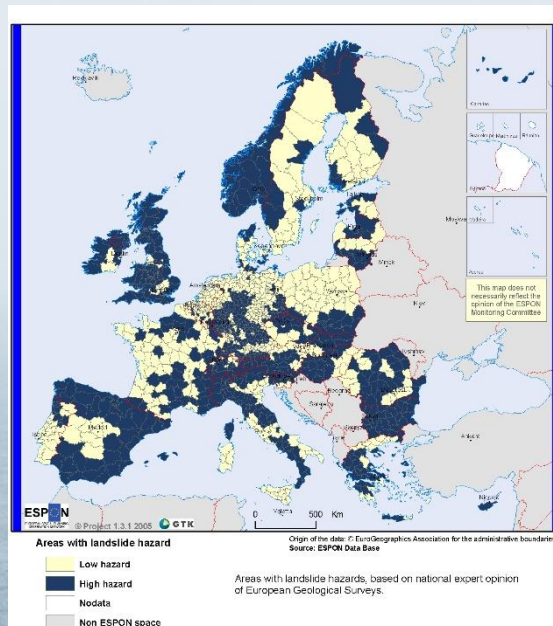


Climate connection: 1. Awareness

“Climate change is expected to increase the likelihood of extreme weather events occurring at a shorter interval in the future.”

PA Secure

Action Plan (2015)



Climate connection: 2. Understand challenges and invent methods to cope with them



14.3 Risk Assessment

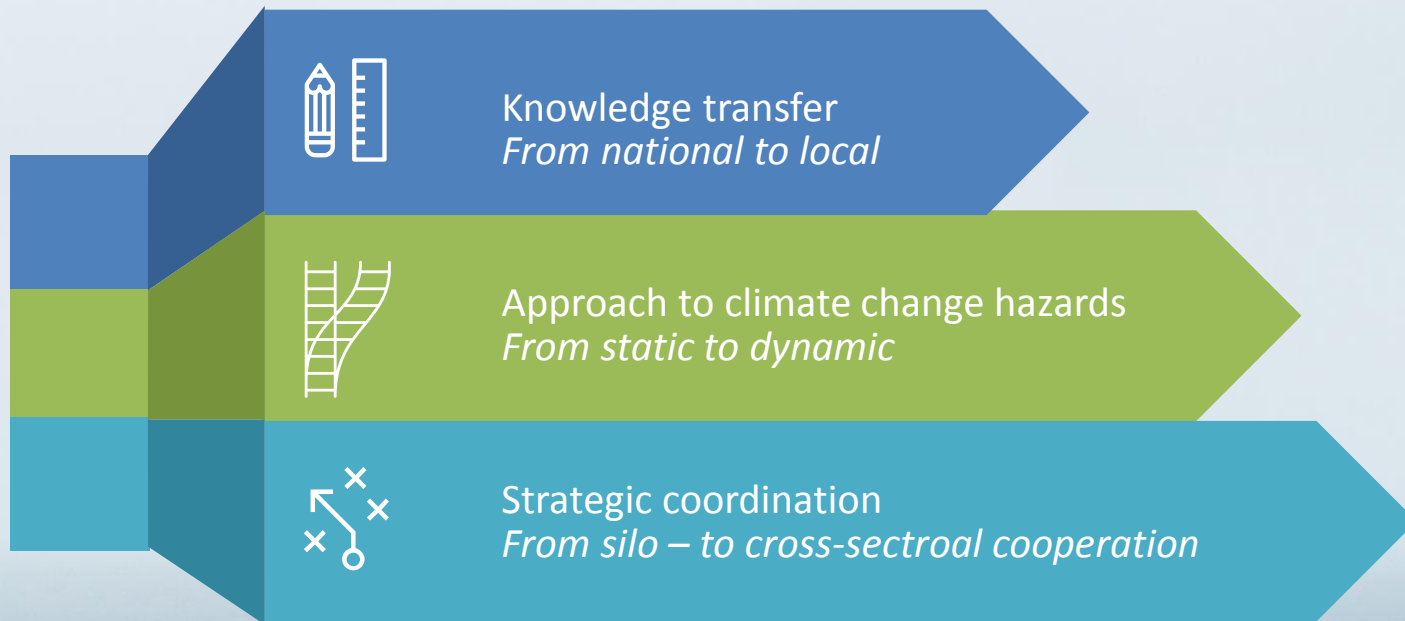
What are the
risks?
Scenarios based
approach



From Gaps to Caps Capability Assessment

How ready are
we for them?

Climate connection: 3. Defining focus



Monitoring example – post-project survey

What has this project and its results brought to your organization that wasn't there before and what kind change do you foresee in the future?	How will you implement/utilize the results in a short and long term perspective? What kind of activities can be expected as a result of this project during in the foreseeable future?	Which other organisations in your country would have an interest in the results of the projects? Are there any other potential end-users?	What kind of macro-regional impact will this project generate?	Will the project output (all or parts of it) be translated into national languages in order to make it more accessible for all levels of professionals?	How can PA Secure support your organisation in the implementation of the project results?
The project has given a better understanding of the challenges in the Baltic Sea Region in relation to the existing capabilities and what gaps there might be. The project also made us look inwards and become more aware of our own capabilities and gaps. This understanding and awareness can be used to fill the gaps through the results and tools identified and developed in the duration of the project.	In short term perspective we can use the results to make a more thorough risk and capability assessment. This can be used in long term perspective to manage and minimize the gaps found through the risk and capability assessment. These activities can be of great use and have an impact on the effectiveness and quality of the fire and rescue service.	As we have mentioned before during the duration of the project, there is one specific organization in Denmark who could have a great interest in the results of the project. This is the Danish Emergency Management Agency (DEMA), a governmental agency who is responsible for the Danish National Fire and Rescue Service. They, among others, make the national risk assessment. They represent an end-user who could have interest in the methodology for risk and capability assessment.	The possibility of a more general and common methodology for risk and capability management on a macro-regional level. If DEMA finds interest in the results, they can support in disseminating the results and enhance the chance of a macro-regional impact.	The plan is to keep the outputs in English as Danish people are very skilled in English. Far the most of the target group will be able to understand and read English, and if there on a later stage is identified a need, that the project results will have a greater impact by being translated into Danish, can it be considered	PA Secure can support by being available in case any specific support will be needed. This could be by just answering questions or if a greater assistance is needed.

All is connected – linking SDGs



By 2030, ensure sustainable food production systems and implement resilient agricultural practices that increase productivity and production, that help maintain ecosystems, that strengthen capacity for adaptation to climate change, extreme weather, drought, flooding and other disasters and that progressively improve land and soil quality.



5.2 Eliminate all forms of violence against all women and girls in the public and private spheres, including trafficking and sexual and other types of exploitation



8.7 Take immediate and effective measures to eradicate forced labour, end modern slavery and human trafficking and secure the prohibition and elimination of the worst forms of child labour, including recruitment and use of child soldiers, and by 2025 end child labour in all its forms



All is connected – linking SDGs



1.5 By 2030, build the resilience of the poor and those in vulnerable situations and reduce their exposure and vulnerability to climate-related extreme events and other economic, social and environmental shocks and disasters



10.7 Facilitate orderly, safe, regular and responsible migration and mobility of people, including through the implementation of planned and well-managed migration policies



13.1 Strengthen resilience and adaptive capacity to climate-related hazards and natural disasters in all countries

13.2 Integrate climate change measures into national policies, strategies and planning

13.3 Improve education, awareness-raising and human and institutional capacity on climate change mitigation, adaptation, impact reduction and early warning



11.b By 2020, substantially increase the number of cities and human settlements adopting and implementing integrated policies and plans towards inclusion, resource efficiency, mitigation and adaptation to climate change, resilience to disasters, and develop and implement, in line with the Sendai Framework for Disaster Risk Reduction 2015-2030, holistic disaster risk management at all levels

Stay safe and secure

Janusz Gąciarz

janusz.gaciarz@cbss.org